

Social & Labor Convergence Program (SLCP)

*Converged Assessment. Collaborative Action.
Improved Working Conditions.*

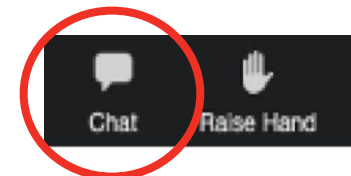
Signatory Engagement Meeting
28 July 2022

Thank you for joining! The meeting will start in a couple of minutes.

SLCP Signatory Engagement Meeting:

28 July 2022

- Please note that the plenary session is being recorded and will be available in the SLCP Signatory Portal. The breakout sessions will not be recorded.
- All attendees are requested to observe Chatham House Rules and follow Anti-trust Guidelines.
- Please use the Chat function to ask questions to the speakers.
- Please remain on mute unless invited to speak.



Meeting Objectives



Objectives

- Update signatories on recent progress and next steps for SLCP.
- Engage signatories in SLCP developments: seek feedback, questions and input.



Meeting Agenda

1) **Presentation by the SLCP Secretariat on progress against Strategic Aims:**
(30 minutes)

- Industry adoption
- Resources unlocked
- Data access and comparability

2) **Breakout sessions facilitated by SLCP Secretariat, Council and TAC Chairs:**
(20 minutes)

- CAF updates
- Full virtual verification
- SLCP and due diligence
- SLCP data quality

Most attendees have been pre-assigned to breakout sessions in line with preferences expressed during registration.



3) **Breakout sessions report back to plenary facilitated by Independent Chair of the SLCP Council** (15 minutes)

Strategic Aim 1: Industry Adoption

Industry
Adoption

Resources
unlocked

Data access &
comparability

Financial
resilience

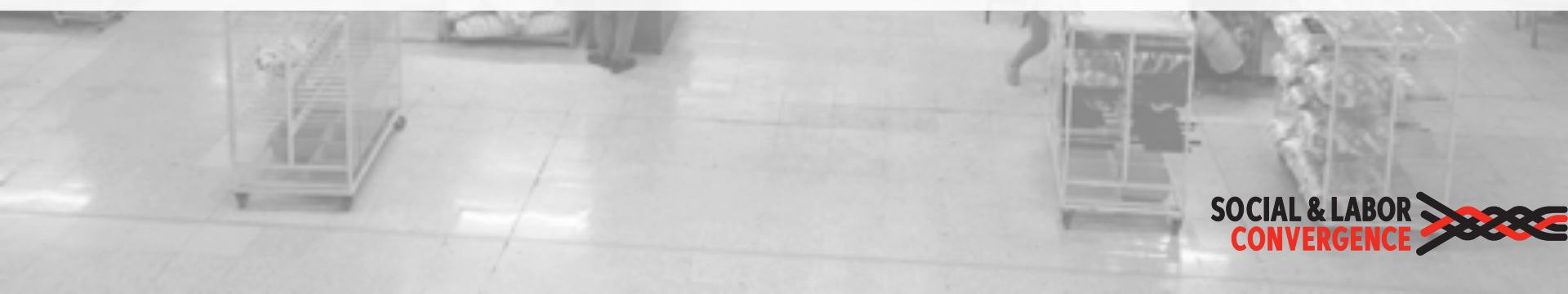
- Update on 2022 operations
- Updates to the CAF

- Sharon Hesp, Senior Manager Operations
- Steve Harris, Interim Senior Manager Technology
- Susanne Gebauer, Senior Manager Assessment & Quality





2022 Operations



Overview of 2022 SLCP ops to-date



8,434 facility profiles in SLCP Gateway



2,212 assessments in process



712 assessments currently being verified



2,909 verified assessments completed in 2022

Top 10 locations of facility profiles:



China (40%) & Taiwan (1%)

Turkey (11%)

India (9%)

Bangladesh (9%)

Vietnam (9%)

Pakistan (3%)

Indonesia (4%)

Sri Lanka (2%)

Portugal

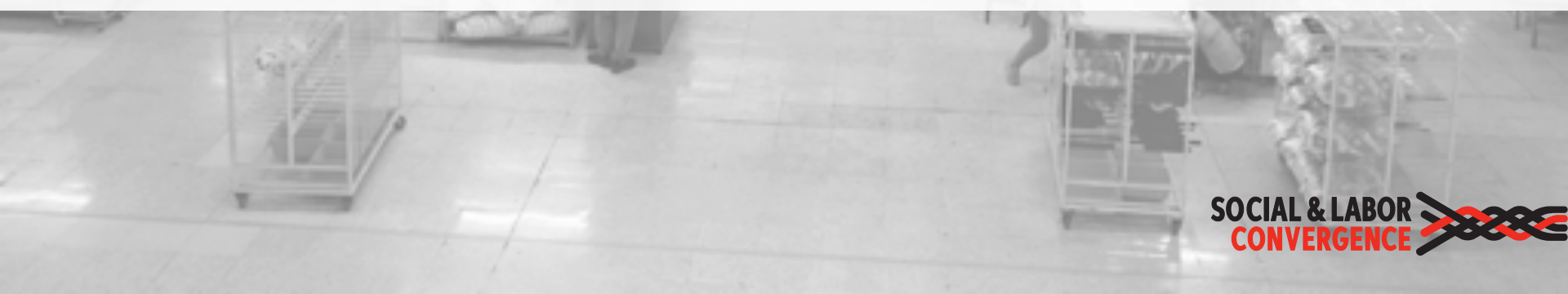
Verifier Capacity

- 65 Verifier Bodies
- 817 Verifiers





CAF updates



Updates to the CAF

The **Converged Assessment Framework (CAF)** is regularly updated to respond to signatory and stakeholder feedback, and to remain a relevant tool.

Updates will become less frequent to ensure stability for users.



SLCP & Better Work Collaboration

Better Work and SLCP have found common ground in promoting credible and actionable data to be shared between a broad range of industry actors to act upon, including governments and workers' and employers' organizations.



**SOCIAL & LABOR
CONVERGENCE**

2021:

- Co-leading development of CAF v1.4: Step 1
- Joint launch in Indonesia, Bangladesh & Vietnam
- BW provision of Law Overlay for National Labour Law in Indonesia, Bangladesh, and Vietnam available on SLCP Accredited Host platforms

2022:

- Co-leading development of CAF v1.5: Step 1 including country-specific questions
- Preparing to expand roll-out to other BW countries & development of additional Law Overlays
- BW access to SLCP data for analysis

2023 and beyond:

- BW to continue to co-lead updates to Step 1 of the CAF
- Continuation of roll-out to other BW countries & development of additional Law Overlays

**SOCIAL & LABOR
CONVERGENCE** 

Coming soon – CAF v1.5

Launching:
November 2022

Why do we need CAF v1.5?

1. Better alignment with BW: data more meaningful in context of local law
2. Flexibility in data validation methods (including virtual)
3. Better interpretation options for SLCP data

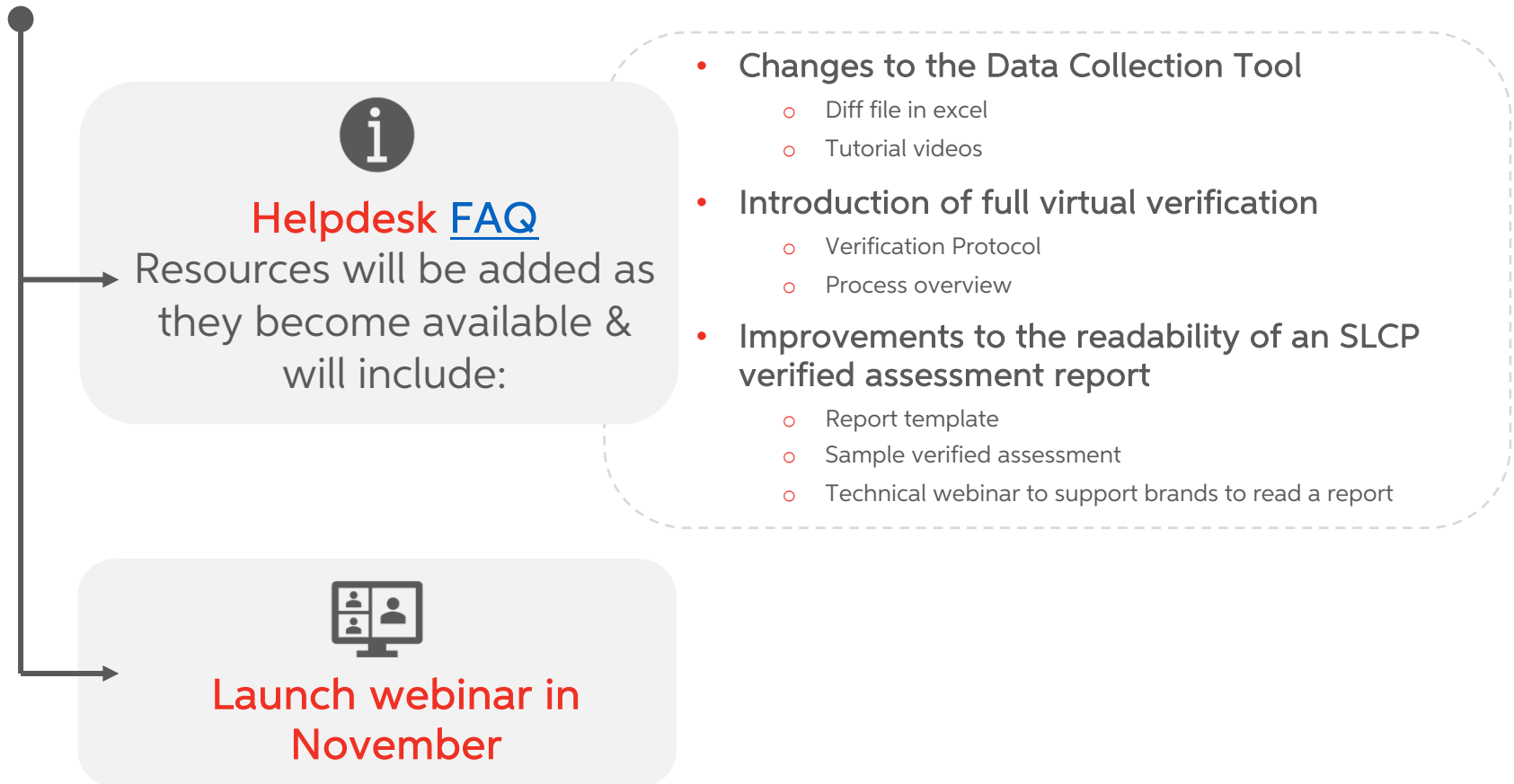
What are the main changes in CAF v1.5?

- Full virtual verification enabled
- Country-specific questions added
- Updates to More Info
- Improvements in question wording
- Improvements in final report readability

Limited impact on mapping

Preparing for the launch of CAF v1.5

What resources will be available to help signatories prepare?



Introducing Full Virtual Verification

Full virtual verification will:

- ✓ Only be possible in a **limited set of exceptional circumstances** (related to lockdowns etc.)
- ✓ Include **Worker Engagement Technology** (WE Tech) survey as a mandatory element
- ✓ Verify a **sub-set of the CAF questions** (some data will be self-assessed only)

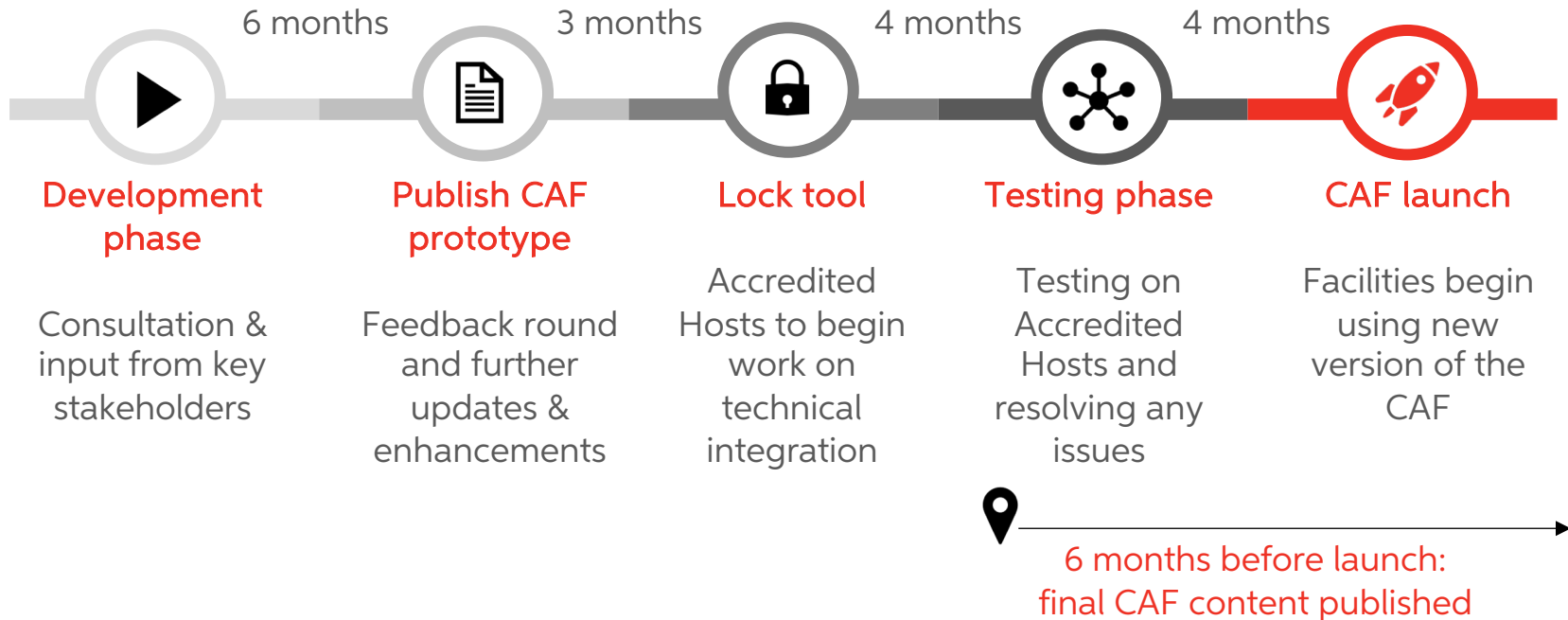


Facilities that wish to undergo a full virtual verification will have to follow additional steps including:

- **Additional training** on full virtual verification
- **Online form** declaring why the facility requires full virtual verification
- **Mandatory use of Worker Engagement Technology** survey

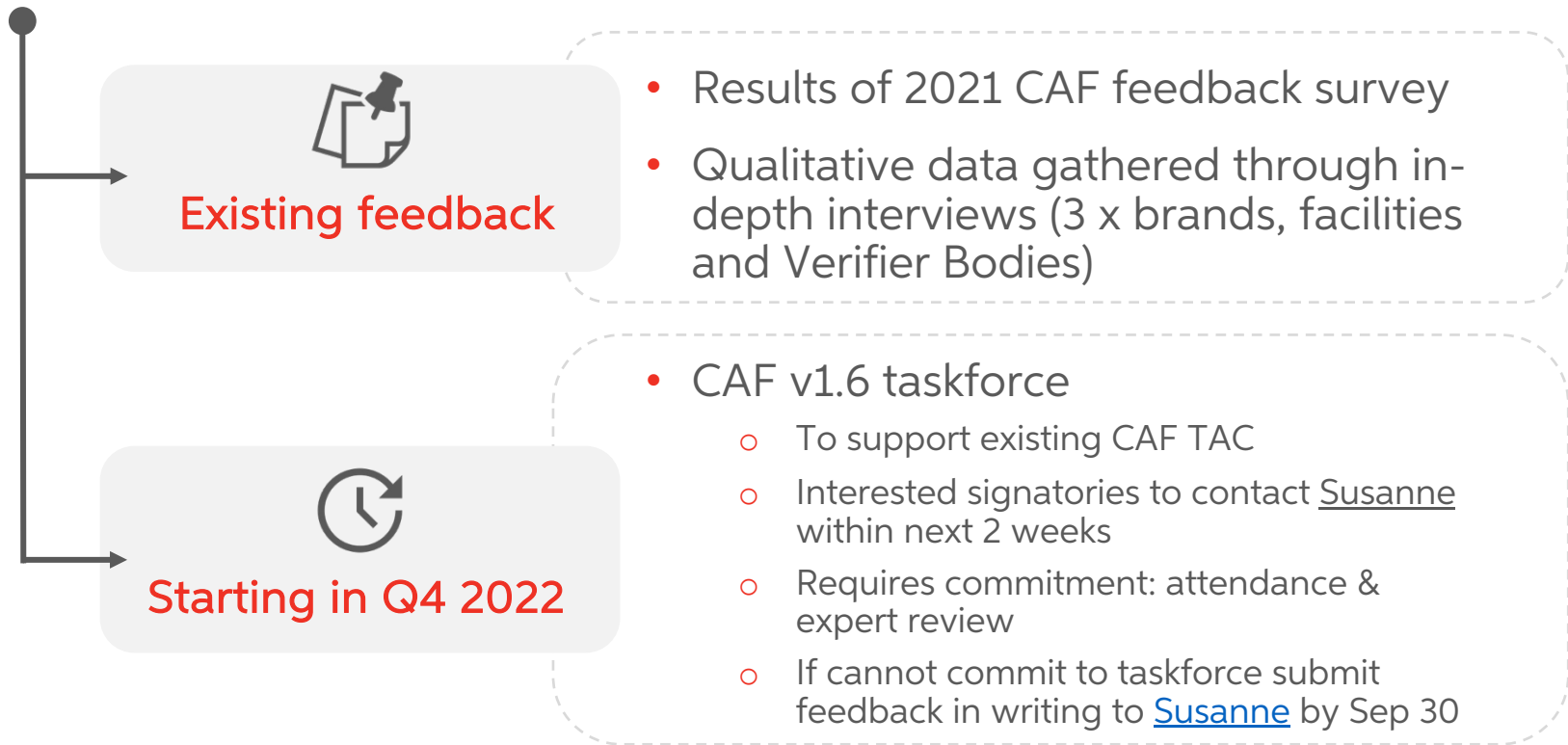
Planning CAF updates

Provisional high-level timeline – based on learnings from previous versions



CAF v1.6: Signatory engagement

How is SLCP engaging signatories and users in the development of CAF v1.6?



Strategic Aim 2: Resources Unlocked

Industry
Adoption

Resources
unlocked

Data access &
comparability

Financial
resilience

- Replacing proprietary audits
- Convergence with existing standards

- Holly Menezes, Senior Manager Comms & Stakeholder Engagement
- Janet Mensink, Executive Director





SLCP acceptance



Increasing acceptance of SLCP

62 brands, retailers, and standard holders now accepting SLCP including:

(See [website](#) for full list)

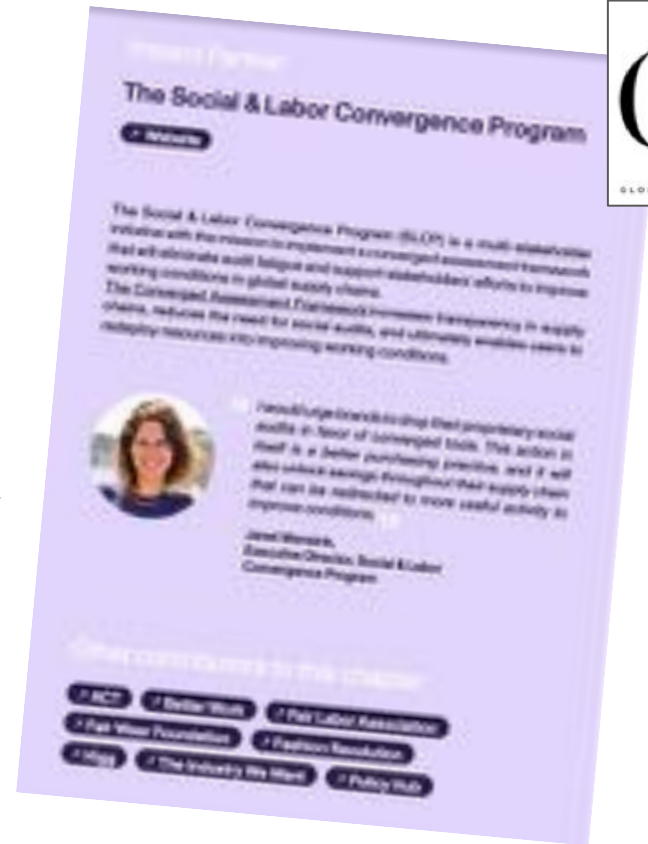


Partnerships to drive SLCP adoption

SLCP is an Impact Partner of the Global Fashion Agenda (GFA)

Adoption of SLCP is recommended in GFA's report "[*The Monitor*](#)"

SLCP represented on panel on *Traceability and Transparency* at Copenhagen Summit





Convergence



Convergence with standard holders

GiZ funded 'Initiative for Global Solidarity' project

to use the CAF to pursue supply chain due diligence. Two aims:

- Compatibility CAF and social schemes
- SLCP sector expansion

Read more on our [website](#)

SLCP is in dialogue with multiple standard holders including:



Collaboration with Fair Wear Foundation



Fair Wear Foundation and SLCP agree shared vision to improve working conditions

Collaboration short and mid-term objectives:

- Fair Wear will develop a process to establish improvement plans based on the SLCP data set with a small number of member brands.
- SLCP and Fair Wear will use the lessons learned from the pilot to explore alignment between SLCP verified assessments and Fair Wear audits.
- SLCP and Fair Wear will report back to stakeholders on the outcomes of these initial activities by the end of 2022.

Collaboration with amfori



Update on amfori and SLCP
collaboration

- Reconfirming the importance of our collaboration
- Commitment to explore the integration of SLCP data on the amfori platform towards the end of the year
- Agree next steps in 2023

[Read the full update here](#)

Strategic Aim 3: Data Access & Comparability

Industry
Adoption

Resources
unlocked

Data access &
comparability

Financial
resilience

SLCP Secretariat:

- Data quality & integrity
- Learnings and data insights
- SLCP and policy developments

- Holly Menezes, Senior Manager Comms & Stakeholder Engagement
- Steve Harris, Interim Senior Manager Technology
- Janet Mensink, Executive Director



Data quality & integrity

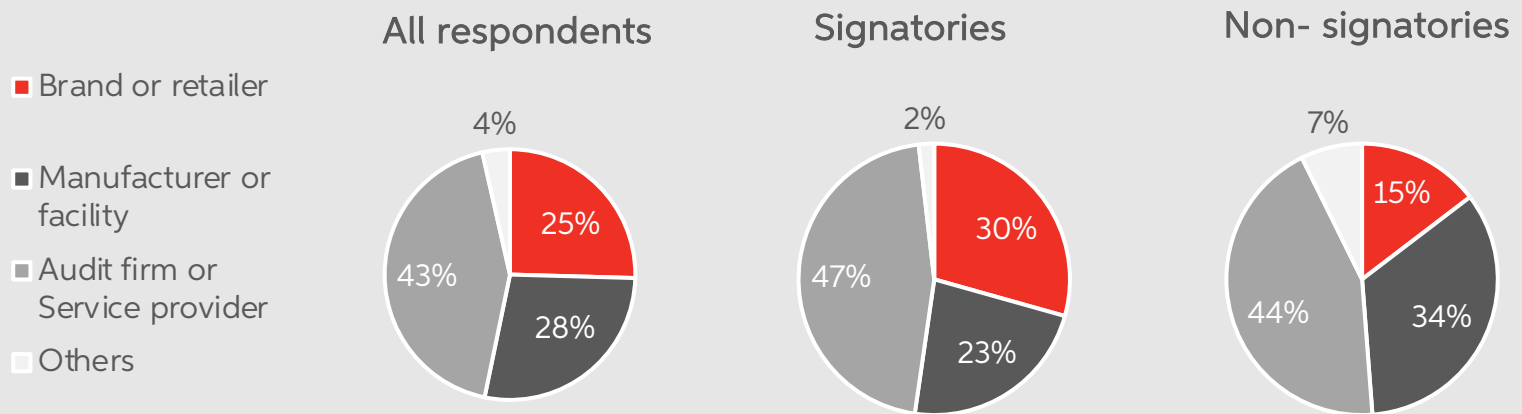


Data Quality & Integrity

Credibility Survey

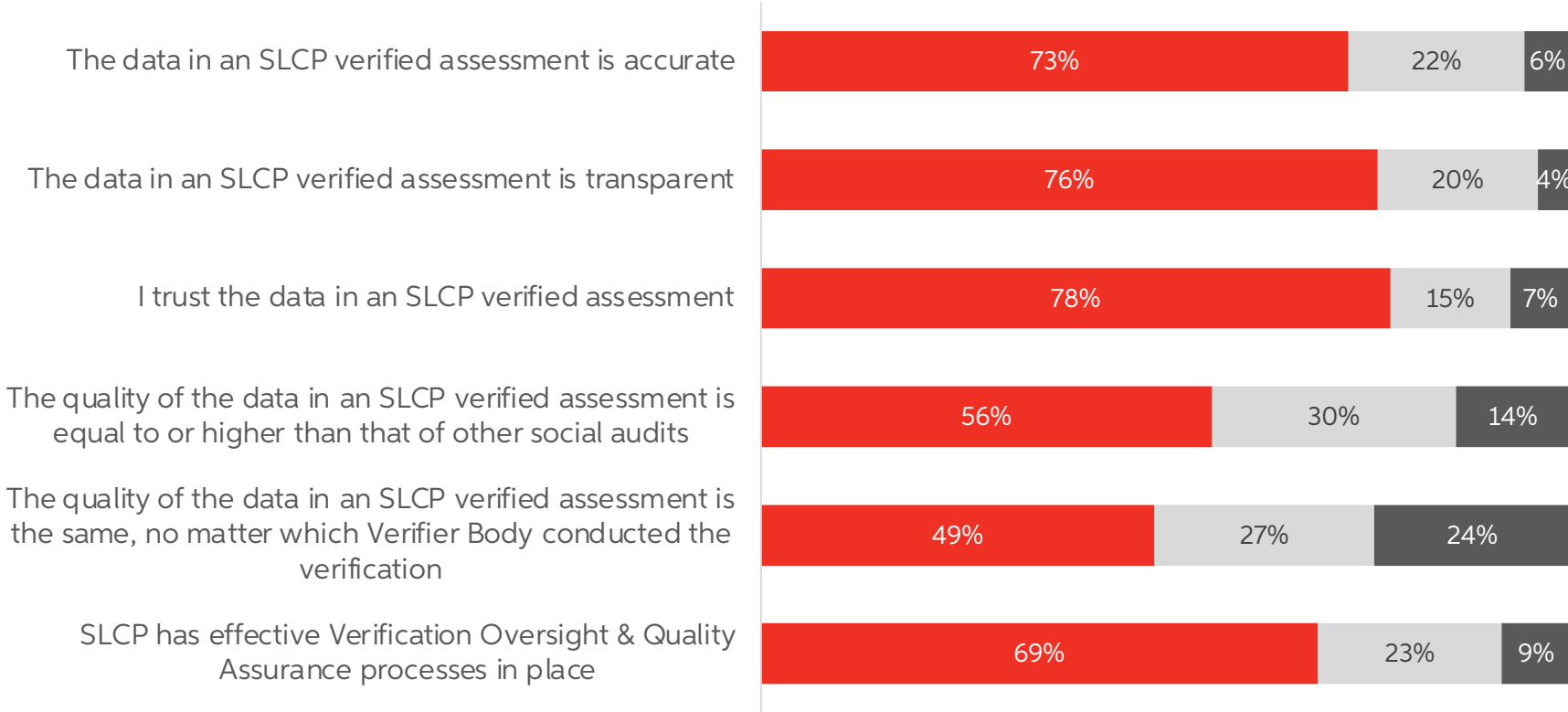
This year we launched an annual credibility survey to better understand perceptions of SLCP data quality and integrity and to set a benchmark for future measurements.

179 survey responses



Credibility Survey Results

■ Agree ■ Neither agree nor disagree ■ Disagree





Learnings & data insights



Learnings and data insights

Summary of 2021 reports



Learning & Evaluation Report

May 2022

In-depth analysis of SLCP 2021 ops

For signatories only

Available on Signatory Portal



Annual Report

August 2022

Strategic & financial accountability

Public document

Available on website



Impact Report

September 2022

Joint SLCP and ITC report
to highlight progress of SLCP and
share data insights

Available on website



SLCP and policy developments



Current regulation in focus for SLCP

EU – Corporate Sustainability Due Diligence
France, Germany, NL, New York, California

Human Rights Due Diligence

Aim

Ensure SLCP / CAF is **aligned** or **acknowledged** tool to implement policy

Why?

To avoid SLCP/ CAF **not being recognised** or alternatively (conflicting) **tools are created and used instead**

Forced Labor Regulation

SOCIAL & LABOR
CONVERGENCE 

Human Rights Reporting Standards

EU – CSRD
UK – Modern Slavery Act
Australia – Modern Slavery Act

(Social) Sustainability Claims

EU – Empowering Consumers
On Green Claims

SOCIAL & LABOR
CONVERGENCE 

US (Forced Labor Act & recent broadened scope)
EU – Decent Work Recommendation (and upcoming legislation)

SLCP and Due Diligence

How can SLCP be used by companies undertaking human rights due diligence?

SLCP is one of many solution providing tools for companies to use.

The CAF can be an accompanying measure in:

- (Step 2): Identifying human rights risks
- (Step 4): Tracking and monitoring human rights risks



SLCP response to the EU's CSDD

Top priorities for the proposed Corporate Sustainability Due Diligence Directive (May, 2022)

Accompanying Measures

1. We appreciate the recognition of accompanying measures (such as SLCP), but *need more clarity* on what the Commission considers 'fit for purpose' in this context.



Risk-based Due Diligence

2. The Commission *should adopt a risk-based approach* to due diligence, as this is the current expectation and most effective in advancing human rights.



Sectorial Guidance

3. The Textile sector is considered high risk. Given its unique risks in its supply chains, the Commission *should provide sectorial guidance which clarifies practical expectations.*



Find a copy of our full response on our website [here](#)

SLCP policy engagement

How is SLCP engaging with emerging regulation?



Blogs on Due Diligence: As part of our blog series, an upcoming article will detail what makes an MSI fit for supporting due diligence implementation



Engagement with key stakeholders: Coordinating with key stakeholders on our continued positioning in response to the European legislation



Publish positions: SLCP will publish a detailed paper on how SLCP can be used for the European due diligence implementation



Smart advocacy: engaging in dialogue with relevant EU policymakers to remain 'front of mind' as a tool for due diligence



Breakout sessions

You will now be assigned to one of the following sessions:

- CAF updates
- Full virtual verification
- SLCP and due diligence
- SLCP data quality

Most attendees have been pre-assigned to breakout sessions in line with preferences expressed during registration.



20 minutes



Breakout sessions – Feedback!

Facilitated by :

Jonathan Obermeister

Independent Chair, SLCP Council

Breakout sessions:

- CAF updates
- Full virtual verification
- SLCP and due diligence
- SLCP data quality





Thank You!

Recording and slides will be available on the [SLCP Signatory Portal](#).

If you have follow-up questions or would like a call with the Secretariat, please contact info@slconvergence.org

